

T&T SALVAGE

VB-10000



VB-10000

BARGE PARTICULARS

US FLAG, ABS CLASS, ⚓A-1 BARGE HELIDK, ⚓DPS-3

| | |
|----------------------|--------------------------|
| GROSS ITC | 8,633 LT |
| DISPLACEMENT | 12,053 LT |
| LENGTH | 290' |
| WIDTH | 314' |
| DEPTH | 20' |
| OPERATING DRAFT | |
| THRUSTERS RETRACTED | 12'6" |
| THRUSTERS EXTENDED | 20' |
| SPACE BETWEEN BARGES | 166' |
| AIR DRAFT | 260' |
| THRUSTERS (8) | 1,000 HP EACH |
| HELIDECK (2) | SIKORSKY S-76 / BELL 412 |
| MOORING WINCH (4) | DOUBLE DRUM MD-97 |
| FUEL CAPACITY | 80,000 US GALLONS |

LIFT PARTICULARS

| | |
|----------------------|----------------|
| CAPACITY MAIN | 7,500 TONS |
| MAXIMUM TRANSIT LOAD | 4,500 TONS |
| MAIN BLOCKS (4) | 2,000 TON EACH |
| CLAW BLOCKS (4) | 500 TON EACH |
| MAIN HOOK HEIGHT | 178' |

THE CLAW

| | |
|------------------------|------------------|
| NUMBER | (2) 1 PER GANTRY |
| EMPTY WEIGHT | 1,200 TONS EACH |
| LIFTING CAPACITY | 2,000 PER CLAW |
| WATER DEPTH CAPABILITY | UP TO 400' |

T&T MARINE SALVAGE, INC.

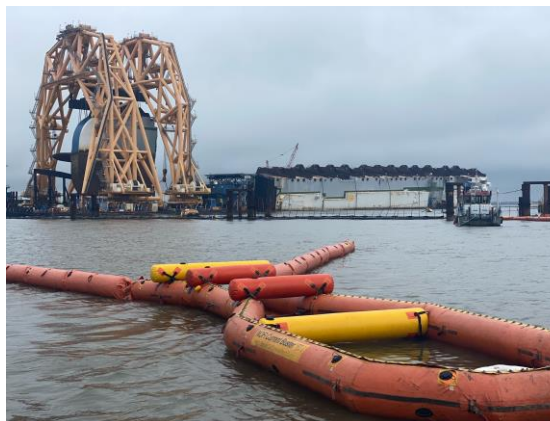
9723 Teichman Road

Galveston, Texas 77554

Phone: +1 (409) 744-1222 • Fax: +1 (409) 744-5218

www.teichmangroup.com

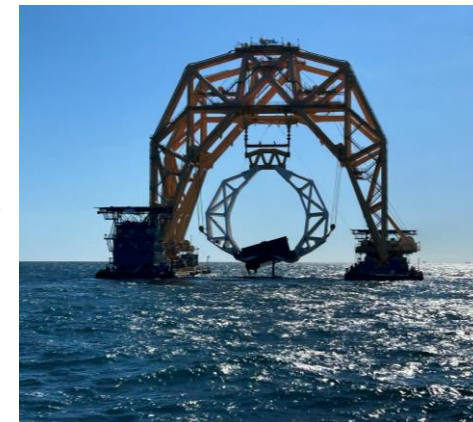
info@teichmangroup.com



VB-10000 USING ONE CLAW
TO LIFT SUBMERGED TANK
WEIGHING 1,500 TONS – NO
DIVERS NEEDED



VB-10000 DURING
SHIPWRECK REMOVAL
LIFTED SECTIONS UP
TO 7,400 TONS



VB-10000 LIFTING JACKET
IN THE GULF OF MEXICO



VB-10000 INSTALLING A
PLATFORM IN MEXICO

CAPACITIES ARE IN SHORT TONS
SPECIFICATIONS ARE SUBJECT TO CHANGE WITHOUT NOTICE