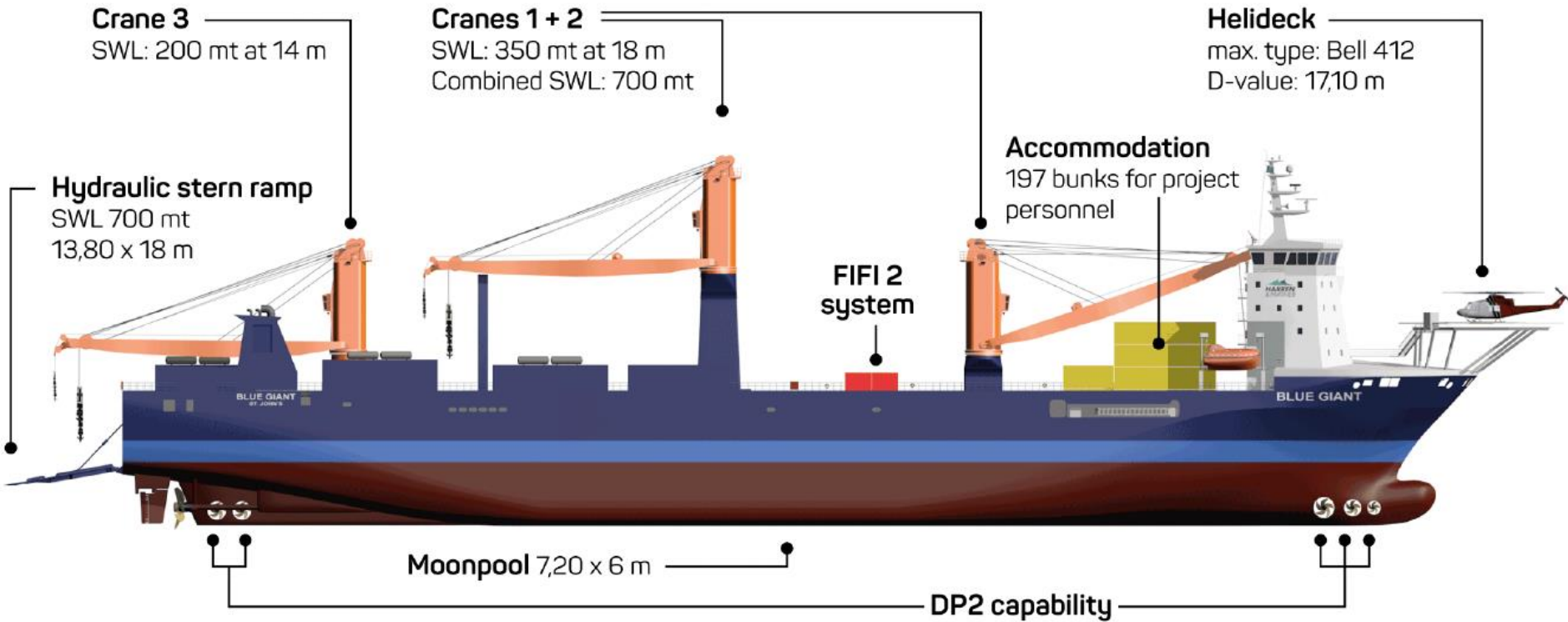


T&T SALVAGE

MEXICAN GIANT

OFFSHORE CONSTRUCTION VESSEL



MEXICAN GIANT

VESSEL PARTICULARS

FLAG	MEXICO
IMO NUMBER	9400485
GET INTERNATIONAL	18,189
NT INTERNATIONAL	5,458
DEADWEIGHT	6,812
LENGTH	179.63 M
WIDTH	25.4 M
MAXIMUM DRAFT	5.6 M
MAIN ENGINE (2)	TOTAL POWER 9,000 kW
AUXILIARY ENGINE (8)	1,536 kVA
THRUSTERS (3)	2,760 kW
MAXIMUM SPEED	15.0 KNOTS
CAPACITY OF HOLDS	22,800 M ³
MAXIMUM DECKLOAD	
TANKTOP	16 MT/M ²
TWEEN DECK	4.58 MT/M ²
HATCH COVER	2.55 MT/M ²
DOCKSHIP HOLD	132 M X 18 M
CRANE 1	200 MT
CRANE 2 AND 3	350 MT (700 MT COMBINED)
STERN RAMP	SWL 700 MT, 13.8 M x 18 M
ACCOMODATION	197 PASSENGERS
FIRE FIGHTING	FIFI 2
MOONPOOL	7.2 M x 6 M
HELIDECK (2)	BELL 412
CLASS /NOTATION	
+100 A5 E SPECIAL PURPOSE SHIP BWM EQUIPPED FOR CARRIAGE OF CONTAINERS DP-2 IW NAV-OC OPEN-TOP STRENGTHENED FOR HEAVY CARGO +MC E AUT TMON	

T&T MARINE SALVAGE, INC.

9723 Teichman Road

Galveston, Texas 77554

Phone: +1 (409) 744-1222 • Fax: +1 (409) 744-5218

www.teichmangroup.com

info@teichmangroup.com



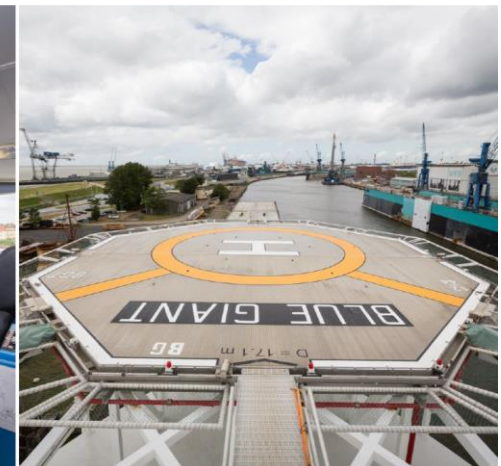
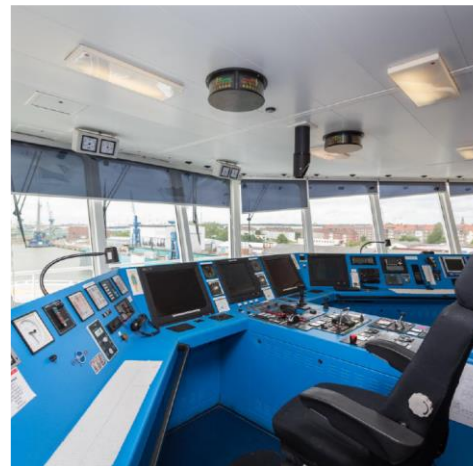
SALVAGE PROJECT
TRIPOLI, LIBYA



GALLEY



ACCOMODATION



BRIDGE AND HELIDECK